



Hurricane Matthew

Weather Briefing 2

Prepared 5:00 am EDT Wednesday, October 5, 2016

Prepared by

NOAA's National Weather Service
New York, NY Forecast Office



Diminishing Threat



- Big changes in the last 12 hours-

Significant shift in forecast guidance and NHC track forecasts suggest a much further position to the south. This results in reduced potential for impacts across the area this weekend. However, please maintain situational awareness in case the forecast changes.

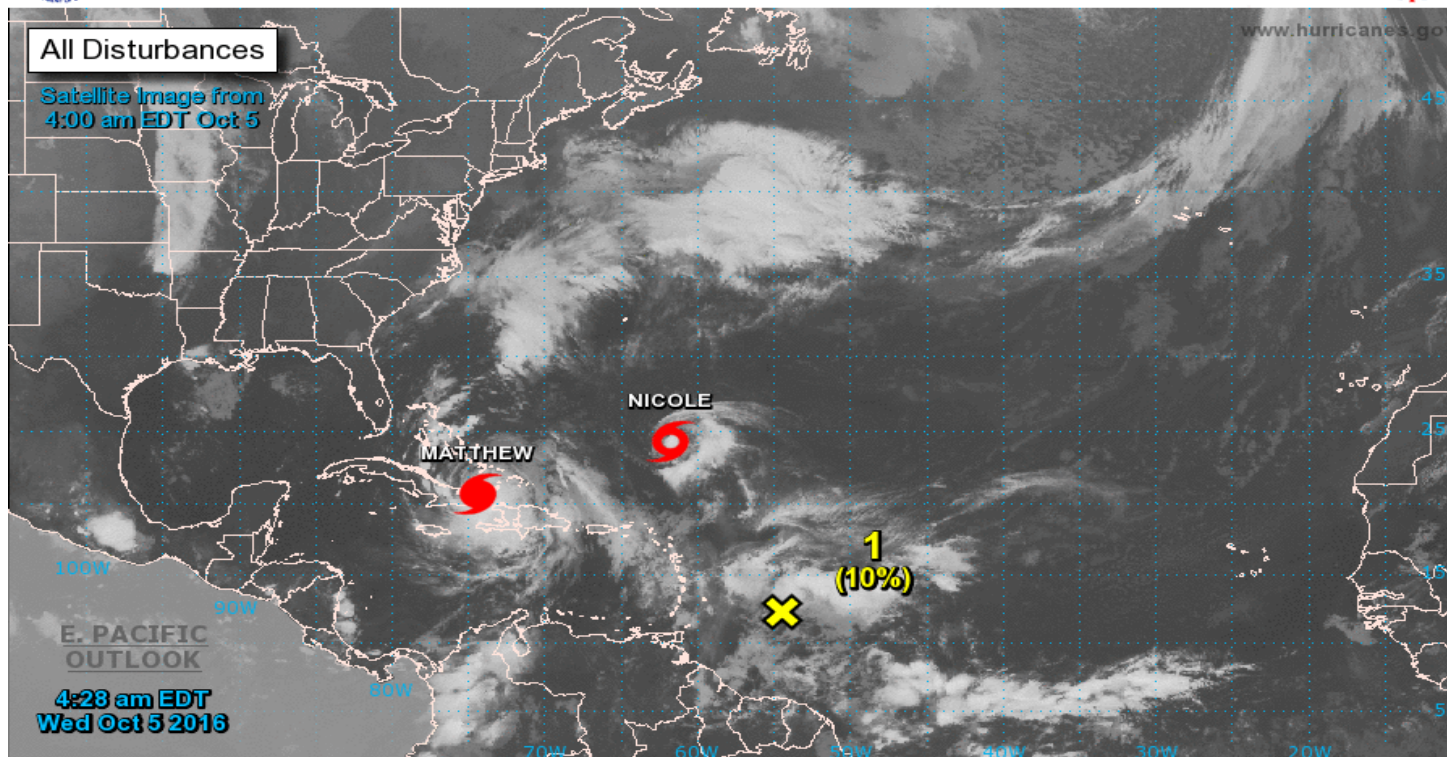


Tropical Cyclones October 5 at 5 am



Two-Day Graphical Tropical Weather Outlook

National Hurricane Center Miami, Florida



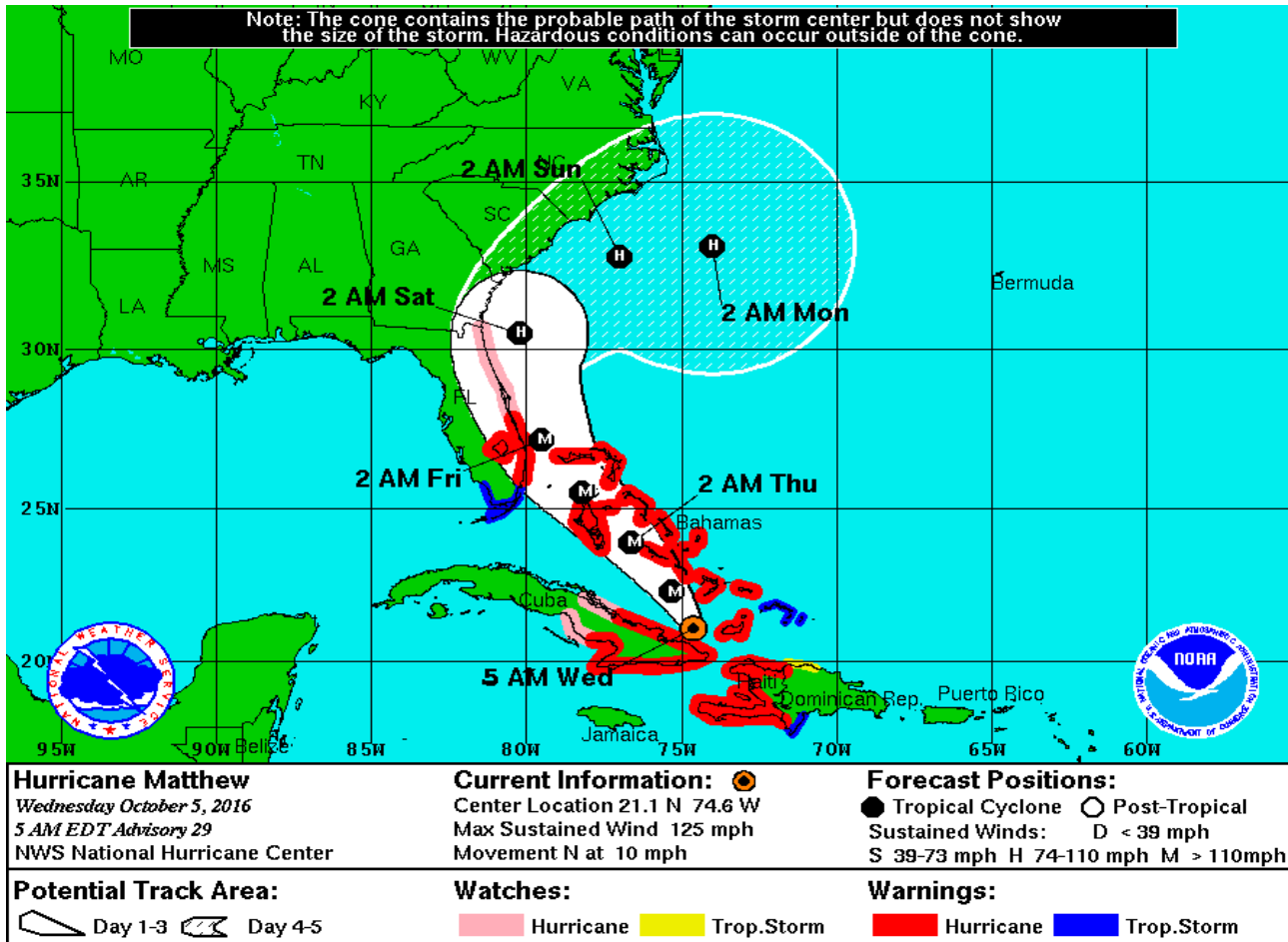
Current Disturbances and Two-Day Cyclone Formation Chance: < 40% 40-60% > 60%

Tropical or Sub-Tropical Cyclone: Depression Storm Hurricane

Post-Tropical Cyclone Remnants



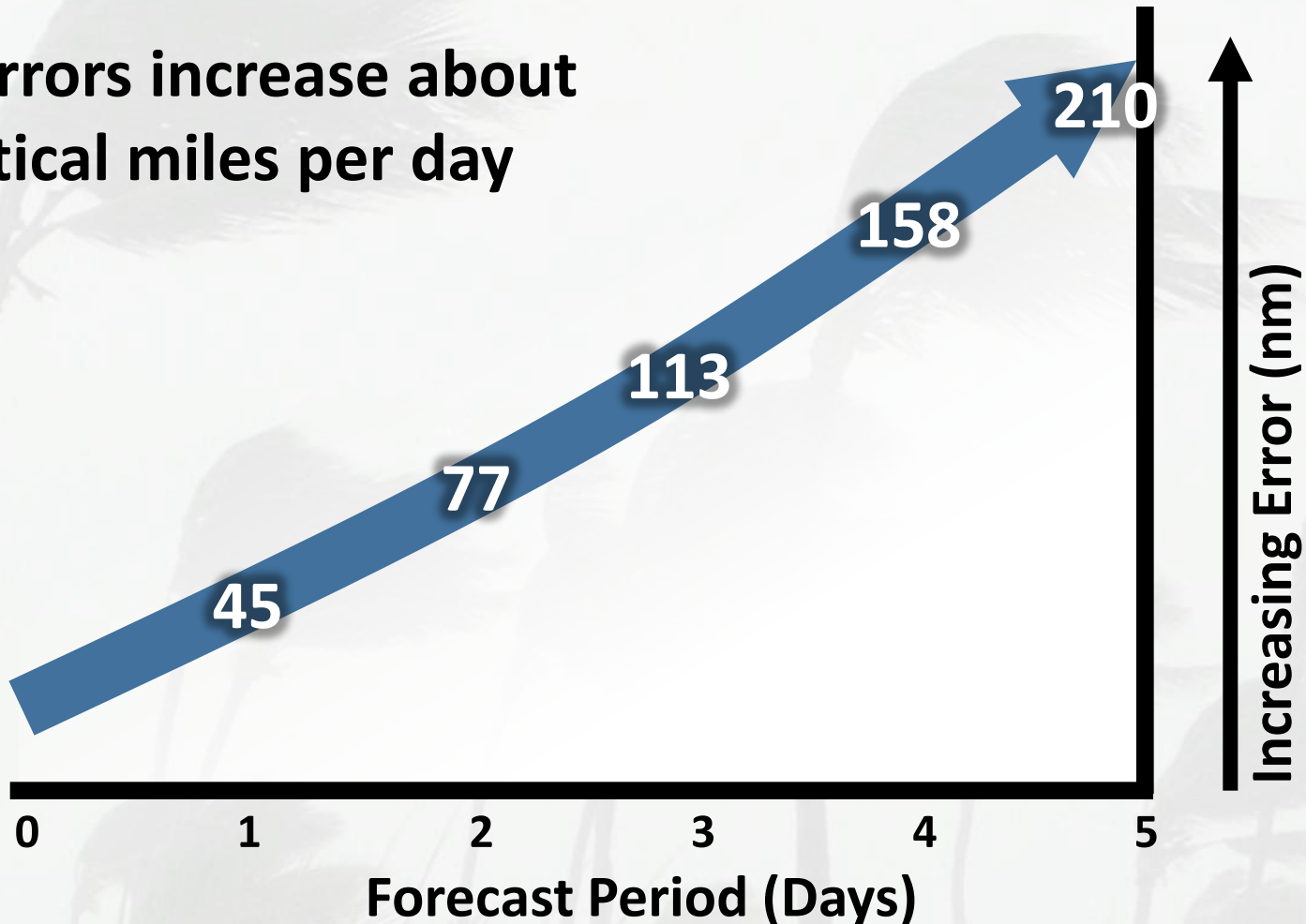
Hurricane Matthew Forecast Error Cone Issued October 5 at 5 am



Forecast Track Errors

NHC 5-Year Averages

Track errors increase about
40 nautical miles per day





Hurricane Matthew

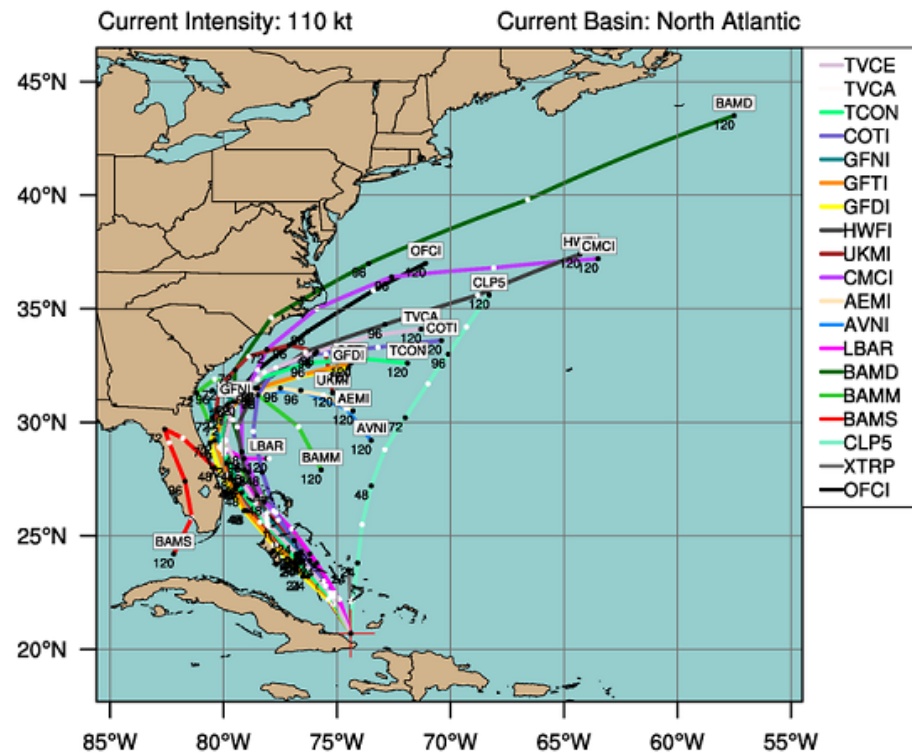
Selected Forecast Model Tracks



MAJOR HURRICANE MATTHEW (AL14)

Early-cycle track guidance initialized at 0600 UTC, 05 October 2016

- Day 5 Forecast Uncertainty: +/- 210 NM



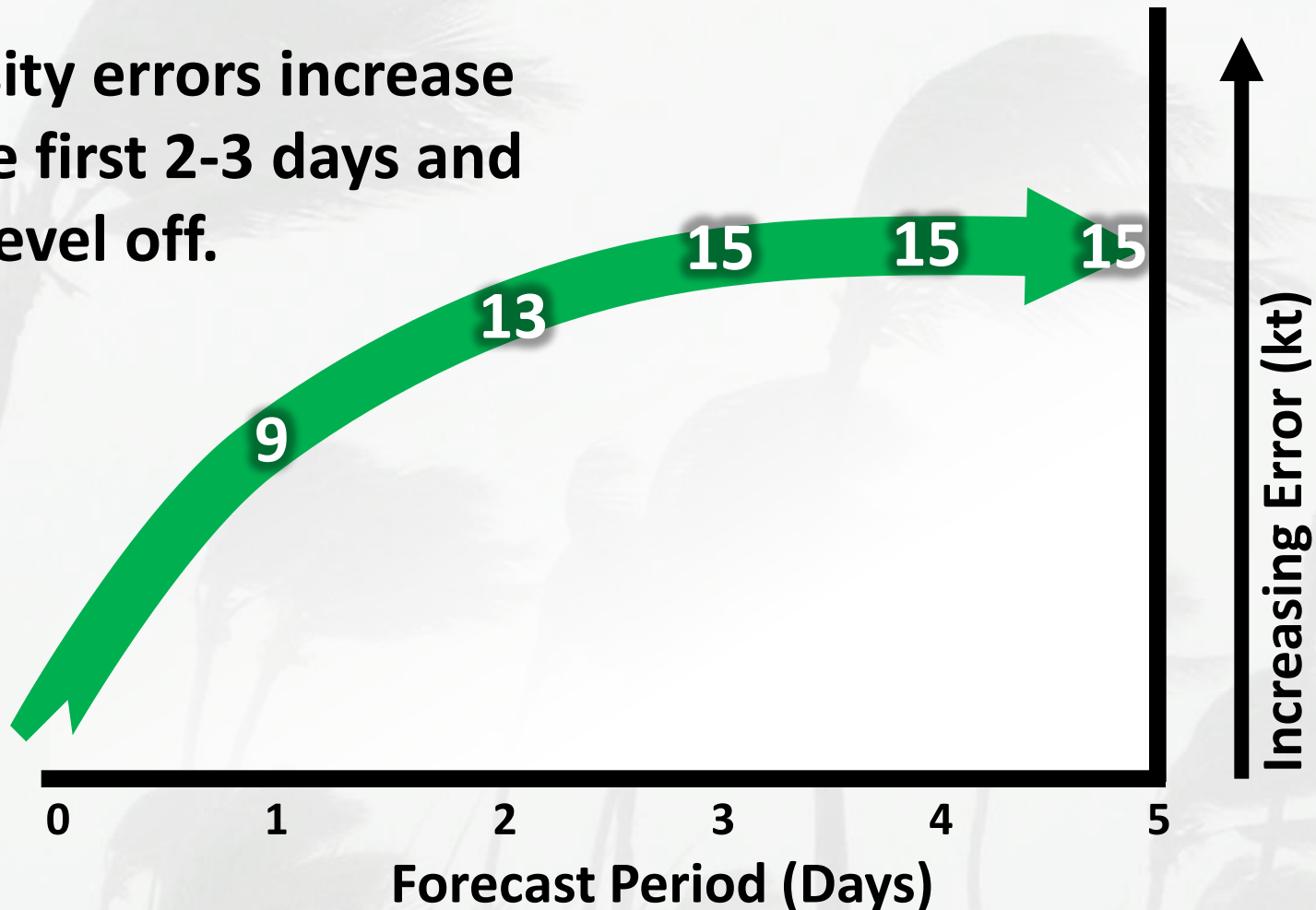
By using this plot, the user agrees to the UCAR Terms of Use which can be accessed at: <http://www2.ucar.edu/terms-of-use>

Plot generated at 0750 UTC 05 October 2016

Forecast Intensity Errors

NHC 5-Year Averages

Intensity errors increase for the first 2-3 days and then level off.

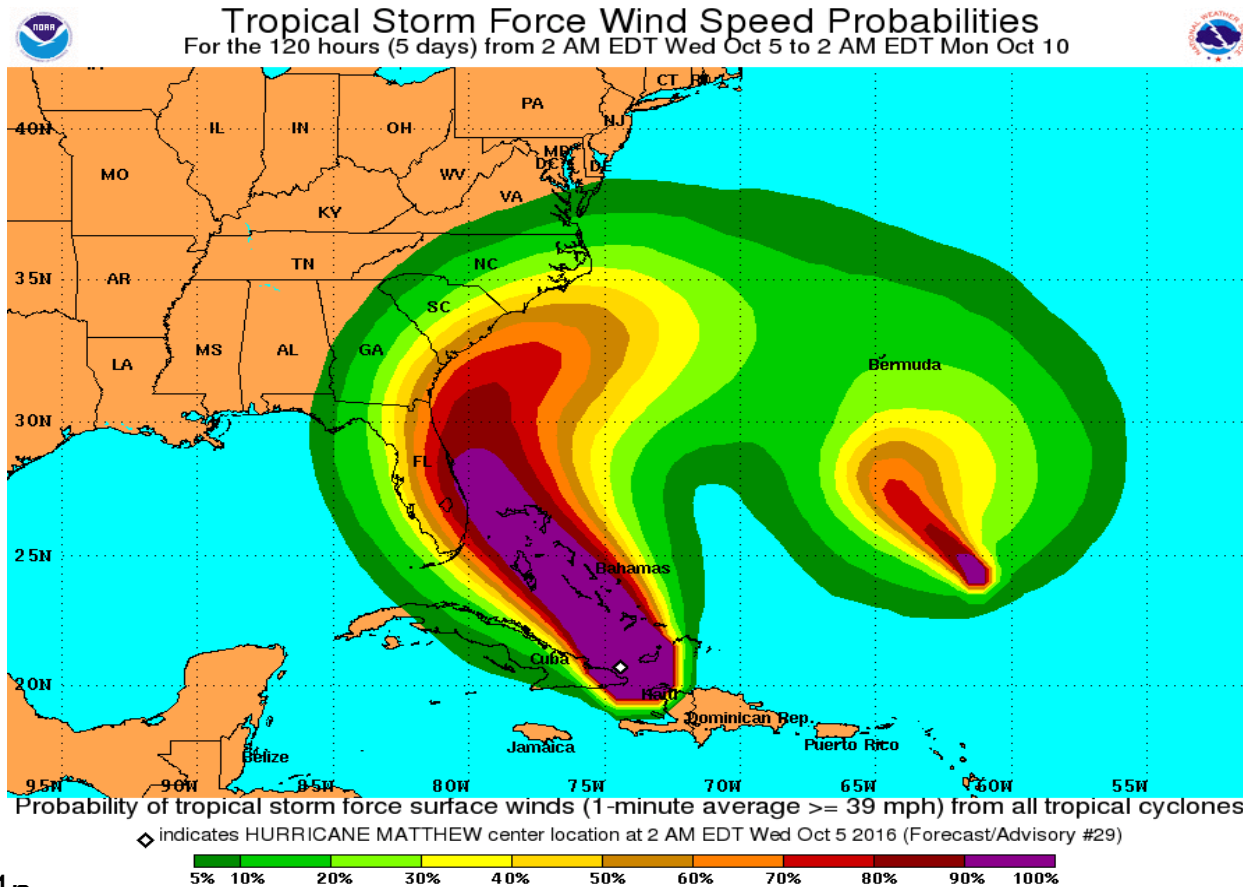




Probability of Tropical Storm Winds of 39-57 mph

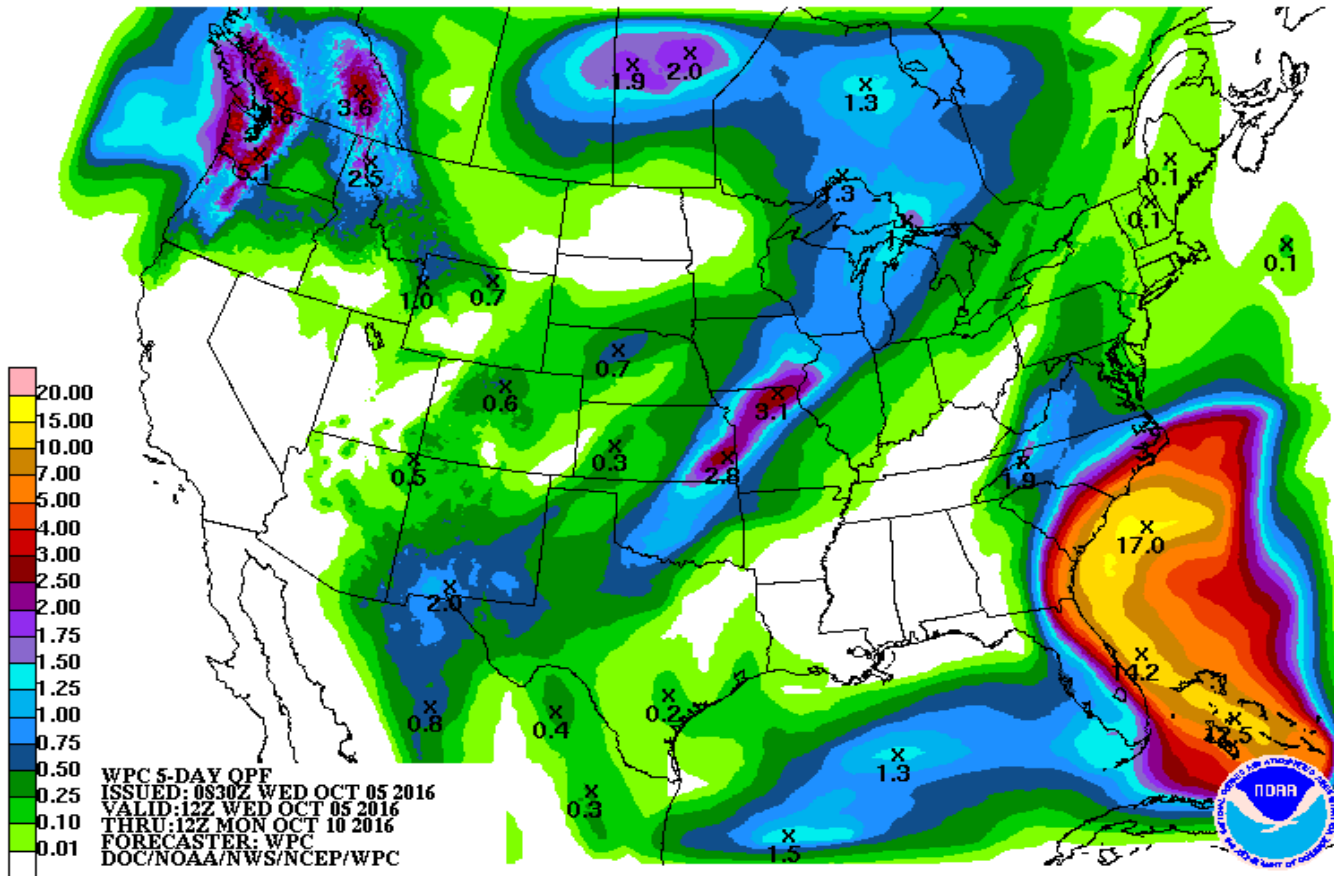


- Probability has significantly decreased





Heavy rain potential has decreased Weather Prediction Center





Contact Information



- National Hurricane Center
 - <http://www.nhc.noaa.gov>
- National Weather Service New York, NY
 - <http://www.weather.gov/nyc>
- Ross Dickman, Meteorologist In Charge
 - i.ross.dickman@noaa.gov
- Gary Conte, Warning Coordination Meteorologist
 - gary.conte@noaa.gov

10/5/2016